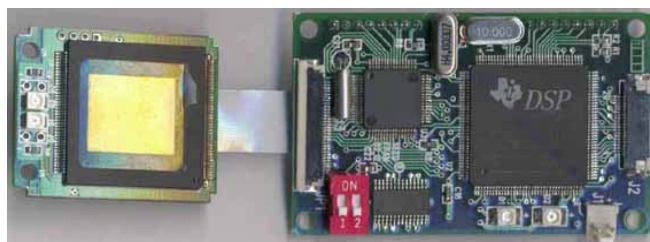


Embedded Fingerprint Verification Module

Introduction:

Fingerprint Module EFM02 is a stand-alone built-in DSP fingerprint verification system. Following the all-in-one design concept, it integrates fingerprint capturing, processing, matching and data storage in the module. The compact shape makes it very easy to put into many application systems. The module is divided into two parts: fingerprint capturing module and processing module. Semi-conductor sensor can get high-quality fingerprint images, while processing module communicates with external system by RS232 serial port.



Features & Advantages:

- Compact shape, easy to integrate
- Excellent fingerprint algorithm
- Standard external interface include RS232, 485
- Greatly improved capability to processing hard-to-read fingerprint
- Unique fingerprint feature extraction technique without distortion
- Easy to use our hardware and software development kits for SI

Specifications:

Fingerprint storage capacity	32, extendable to 2000
Time for fingerprint verification	<1 sec
Data size of fingerprint template	<200Bytes
Matching mode	1: 1 or 1: N
FRR	<0.1%
FAR	<0.001%
Sensor	Fujitsu MBF200
Resolution	500dpi
Power supply	DC5V ± 10%
Power consumption	10 μ A @ sleep, 100mA @ standby 150mA @ max
Interface	RS232, 485
Operating temperature	0°C~60°C
Operating humidity	5%~95%

Application Fields:

Door-Lock System, Time & Attendance Management, Building Access Control, ATM, POS, etc.